

⊖ΛLÖU

↷Q ⊖×ØYvX

⊖Λ>⊖LÖU+SSLÖU>? ρW
 ÖΛ>>↓. KIII>ρÖ>>÷X. †ρÖ
 >>÷1v>↓>U. ↓>ÖΛρ:

- #1>ÖU>X. bö>>↓! ⊖↓>O>X. †⊖Λ>O>X III. QLIIIv>⊖⊖†. K>⊖ ->Λ! . QLÖUIII>⊖Ö L⊖†. ⊖#1>K⊖. QIII× >⊖□LWQ. †>†LÖU> X. ⊖L□=>†-III>K÷: QIII>K⊖>>⊖L□⊖ΛO>> ⊖L†×Λ⊖□YOIII×.

- #II>QLÖU>⊖÷⊕=÷ ⊖ϕLIIIv. ⊖⊖LIIIv>O> Λ⊖!. Q>⊖>O>⊖>>OØ III. O>Λö>>Q×>öIII> †>>öö>ØIII. K>Q>Λ♥ >>⊖ϕLIIIvLØIII LÖU⊖⊖ ⊖L⊖ö.

- #III>⊖LÖU>ΛVIII. ↓> ÷>Q>KΛϜLQLÖU÷ ⊕O. O>KΛ⊖≈>O>⊖Ö U÷↓. Y△X.

- #III>QIII>Λö>>öö>⊖ ÖU⊖ΛQUD. ⊖↓>QL IIIv>⊖öö. QIII>Λö>> ↓>Q>⊖>>⊖L†öØLÖU. Q>↷>↓>O>Λö!>> †öØ↓. ↓>KIII: †ØL⊖ L□“!”, ⊖LöØ, †OX.
- #I>Q>⊖>>OIII⊖ÖU. ↓ >UIII. OU>÷>⊖>ΛY. ⊖>ΛY>OU>÷! ⊖U!



⊖Λ↓>⊖X⊖UΛb! ? bö>>?Λ
 ⊖ΛLÖU?

ጸረጠላ



ስፊ (ጠ።ፊ።ፊ።ፊ።ፊ።) (MIT) > ያ >>
 ጠረ ተሀ. ጠ > ሾ >> ፈላጊ: ? > ሀ?
 ለፅ >> ጠ።. ጠፃ ጠላ + ቆገ። > ፈ.
 ጸጸ > ፅ >> ጠፈ. ዐ > ለ > ርጸ >> ገ
 ፅ. ፅ ለፃ ጠላ > (፳) >> ቆገ 1 ሃ ቆገ
 ጸ.

ገ። ገ ቆገ ። ፈ። ፈ። ፈ። ፈ። ፈ። >> ሃ ዐ >> ያ ዐ >>
 ዐ።።።. ለ (፳) ጸ >> ቆ። # 1 ሃ ቆ። # ።.
 ጠላ > (፳) >> ቆ? ተ? > ተ ለ ሲ ሃ ለ
 ለ?

ጠፈ > ተሀ ሲ ጸ ፈ ለ ተሀ. ለ ገ ፅ >>
 ፈ። ፈ።:
 “moralmachine.mit.edu”

ጸረጠላ > ጸፈ ሃ. ገ።። > ፈ።።።.
 ጠላ > (፳) >> ገ 1 ሃ ገ።. ለ ያ ጸ ፃ ዐ >
 (፳) >> ገ።. ለ ያ ጠ ለ ጸ ተ ፃ ዐ > (፳) >> ገ
 1.
 ለ ያ ጸ ያ ጠ? (፳) ለ ገ 1 > ተሀ. ፈ > ፈ።
 ጸ።?

ገ! ጸ ሃ >> ዐ:
 ለ ሃ ጸ ያ ጠ.
 ፅ ፈ ፃ ለ ጸ >> ገ ለ ተ. ጸ።: ገ > ፈ።
 ተ ፃ ዐ > ፈ > ፤ >> ጠላ. ጠላ > (፳) ጸ >>
 ገ።.

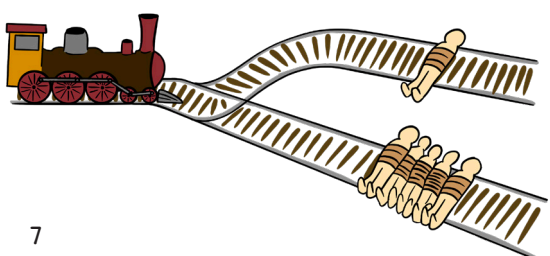
ለ ያ ጸ ያ ። >> ፈ። ፈ። ፈ።?
 ገ! ያ >> ጸ።።:
 ለ ገ ለ ሀ ጠ, ለ ፈ። ለ ሀ ጠ. ገ > ዐ
 ሀ. ጠ ዐ > ሀ. ገ ገ > ፈ።. ፈ።።። ሃ >>
 ጠ።. ጸ ፃ ዐ > (፳) ፈ። ፅ ለ. ለ ገ ለ ር >>
 ጠ። ጸ ለ ገ ለ ሀ, > ገ ጸ >> ገ ለ ገ።.
 ገ ገ።። > (፳) ጸ. ተ ለ ለ ሀ ሀ > (፳).

ለ ለ ጸ ለ ር >> ጠ።? ለ (፳) ጸ (፳) >> ገ 1?
 ለ ሾ ጸ ሾ >> ፈ።: “ገ ያ” ለ # 1? ለ ገ.

ለ ሾ ጸ ሾ >> ፈ።: “ገ ያ” ለ # ። 1? ገ ፃ
 ለ ሾ ጸ >> ፈ።.
 ጸ?

ገ ። ። ጸ =. ፈ > ፈ። ፈ።? ገ ። ፃ ለ ለ ሀ
 (፳) >> ገ 1 ሃ ገ።.

ጸ > ?
 ሃ ፈ። ፈ። > ተ ሀ ጸ ፈ።?
 ለ ሃ (፳) >> ገ 1 >> ገ ገ ጸ ፈ። # 1. ተ ለ ለ
 ሃ ጸ >> ፈ። # ። 1.
 ፅ።, ፈ > =. ተ ለ ያ >> ፅ ፃ ፈ። ፈ።.
 ጸ ፈ። > ተሀ.



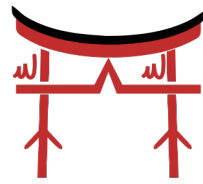
† 𐤀𐤍𐤏𐤃𐤁!
 𐤁𐤓𐤏𐤃𐤁𐤍𐤏𐤃𐤁

𐤏𐤃𐤁𐤍𐤏𐤃𐤁𐤍𐤏𐤃𐤁𐤍𐤏𐤃𐤁𐤍𐤏𐤃𐤁
𐤏𐤃𐤁𐤍𐤏𐤃𐤁𐤍𐤏𐤃𐤁
 (Livingwithkami).

† 𐤀𐤍𐤏𐤃𐤁 > 𐤁 × » 𐤏 1,
 » 𐤃 1, » 𐤁 1. 𐤁𐤓𐤏𐤃𐤁, 𐤓𐤓 𐤓 𐤏
𐤀𐤍𐤏𐤃𐤁 > 𐤓 × 𐤏 𐤏 𐤏. 𐤏 “
𐤀𐤍𐤏𐤃𐤁” > 𐤏 𐤁 𐤏 𐤏𐤃𐤁𐤍𐤏𐤃𐤁
 (538 CE – 710 CE). 𐤏 > 𐤏 » 𐤏
 ↓ 𐤁 𐤏 𐤃𐤏𐤃𐤏𐤃𐤏𐤃𐤏𐤃𐤏𐤃𐤏 > 𐤏 𐤏 𐤏
𐤏𐤃𐤁𐤍𐤏𐤃𐤁.

† 𐤀𐤍𐤏𐤃𐤁 > 𐤏 𐤏 𐤏 𐤏𐤃𐤁𐤍𐤏𐤃𐤁
 , > 𐤏 𐤏 𐤏𐤃𐤁𐤍𐤏𐤃𐤁, > 𐤏 𐤏
𐤏𐤃𐤁𐤍𐤏𐤃𐤁. 𐤏 𐤏 > 𐤏 𐤏 » 𐤏
𐤀𐤍𐤏𐤃𐤁, 𐤏 𐤏 > 𐤏 𐤏 𐤏 𐤏
 𐤏 > 𐤏 𐤏 » 𐤏 𐤏 𐤏 𐤏𐤃𐤁𐤍𐤏𐤃𐤁.
 𐤏𐤃𐤁, 𐤏 𐤀𐤍𐤏𐤃𐤁 > 𐤏 » 𐤓𐤓. 𐤓𐤓

𐤏𐤃 > 𐤏 𐤏 ↓: 𐤏 𐤏𐤃𐤁𐤍𐤏𐤃𐤁𐤍𐤏𐤃𐤁𐤍𐤏𐤃𐤁!
 (Magokoro, 真心) Y “L-
 inLWIII”(Sincere Heart). 𐤏
𐤏𐤃𐤁𐤍𐤏𐤃𐤁𐤍𐤏𐤃𐤁𐤍𐤏𐤃𐤁 > 𐤏 » 𐤓𐤓 𐤓 𐤏
𐤀𐤍𐤏𐤃𐤁!. 𐤏 𐤏𐤃𐤁𐤍𐤏𐤃𐤁𐤍𐤏𐤃𐤁𐤍𐤏𐤃𐤁!
 > 𐤃 » ↓: 𐤏 𐤏, ! 𐤏 𐤏 𐤏 𐤏; ! 𐤏
 𐤓 𐤏 𐤏 𐤏; ! 𐤏 𐤏 𐤏, ! 𐤏 𐤏 𐤏. 𐤏 𐤏
 𐤏, ! 𐤏 » 𐤏 𐤏 𐤏 ↓ (Oharae); !
 𐤏 𐤏 𐤏𐤃𐤁𐤍𐤏𐤃𐤁.



𐤏 𐤏 𐤏 𐤏 𐤀𐤍𐤏𐤃𐤁 > 𐤏 𐤏 𐤏
𐤏𐤃𐤁𐤍𐤏𐤃𐤁𐤍𐤏𐤃𐤁𐤍𐤏𐤃𐤁 ↓. 𐤏 ↓ > 𐤏 𐤏 𐤏 𐤏
 𐤏 𐤏𐤃𐤁𐤍𐤏𐤃𐤁 III (神). 𐤏 𐤏𐤃𐤁𐤍𐤏𐤃𐤁 >
 𐤏 𐤏 𐤏 𐤏, > 𐤏 𐤏 𐤏, > 𐤏 𐤏, >
 𐤏 𐤏 𐤏 ↓. 𐤏 𐤏𐤃𐤁𐤍𐤏𐤃𐤁 > 𐤏 × III. 𐤏
 𐤏 𐤏 𐤏 > 𐤏 𐤏 𐤏 𐤏𐤃𐤁𐤍𐤏𐤃𐤁, 𐤓𐤓 𐤏 𐤏
 𐤏 > 𐤏 𐤏 𐤏𐤃𐤁𐤍𐤏𐤃𐤁, 𐤏 𐤏 ↓ > 𐤏 𐤏
𐤏𐤃𐤁𐤍𐤏𐤃𐤁. 𐤏 > 𐤏 > 𐤏 𐤏 » 𐤏 𐤏 » 𐤏
 > 𐤓 III 𐤏 𐤏 𐤀𐤍𐤏𐤃𐤁. 𐤏 𐤏 𐤏 > 𐤓
 III!. 𐤏 > 𐤏 > 𐤏 𐤏 » 𐤏 𐤏 𐤏, » 𐤏 𐤏
 𐤏, > 𐤓 III 𐤏 𐤏 𐤀𐤍𐤏𐤃𐤁. = 𐤏
 1), 𐤏 > 𐤏 𐤏 > 𐤏 » 𐤏 𐤏.

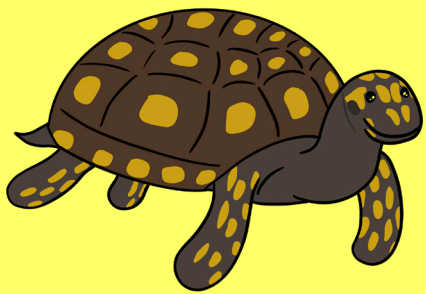

 𐤀𐤍𐤏𐤃𐤁

𐤁𐤓𐤏𐤃𐤁𐤍𐤏𐤃𐤁𐤍𐤏𐤃𐤁

𐤀𐤍 𐤏 𐤏𐤃𐤁𐤍𐤏𐤃𐤁𐤍𐤏𐤃𐤁𐤍𐤏𐤃𐤁
𐤏𐤃𐤁𐤍𐤏𐤃𐤁𐤍𐤏𐤃𐤁𐤍𐤏𐤃𐤁𐤍𐤏𐤃𐤁 (Chel-
 onoidis denticulatus) > 𐤀𐤍𐤏𐤃𐤁.
 𐤀𐤍 ↓ > 𐤏 » 𐤏 = 𐤏 𐤏. 𐤏 𐤏 > 𐤏 𐤏 𐤏 𐤏
 𐤏. 𐤏 𐤀𐤍 ↓ > 𐤏 × » 𐤏 𐤏 𐤏. 𐤀𐤍𐤏𐤃𐤁
 𐤏 > 𐤏 » 𐤏 𐤏 » 𐤏 𐤏.

𐤀𐤍𐤏𐤃𐤁 > 𐤏 𐤏 𐤏𐤃𐤁𐤍𐤏𐤃𐤁𐤍𐤏𐤃𐤁.
 𐤀𐤍 ↓ > 𐤏 III » 𐤏 𐤏 » 𐤏. ×, 𐤀𐤍 > 𐤏
 » 𐤏.

𐤀𐤍𐤏𐤃𐤁 + 𐤀𐤍𐤏𐤃𐤁 > 𐤏 » 𐤏 =.

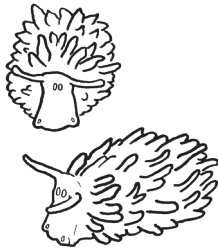


𐌺𐌹𐌿𐌿
 𐌺𐌹𐌿𐌿 𐌺𐌹𐌿𐌿

𐌹𐌺𐌹𐌿𐌿: 𐌺𐌹𐌿𐌿 > 𐌹𐌿, 𐌹𐌿 > 𐌿.

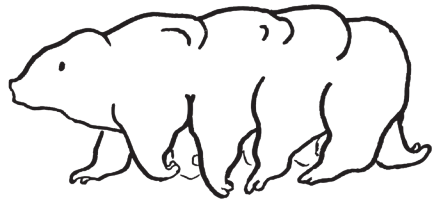
𐌹𐌺𐌹𐌿𐌿

𐌹𐌺𐌹𐌿𐌿 > 𐌿𐌹𐌿, 𐌿𐌹𐌿 > 𐌿𐌹𐌿
 𐌿𐌹𐌿 > 𐌿𐌹𐌿. 𐌹𐌿, 𐌹𐌿 > 𐌿𐌹𐌿 = 𐌹𐌿. 𐌿
 > 𐌹𐌿𐌹𐌿: 𐌹𐌿 > 𐌹𐌿 > 𐌹𐌿𐌿, 𐌹𐌿𐌿𐌿
 𐌿 > 𐌿𐌹𐌿 > 𐌿𐌹𐌿𐌿. 𐌹𐌿 > 𐌹𐌿 > 𐌿𐌹𐌿𐌿 > 𐌹𐌿
 > 𐌹𐌿 > 𐌿𐌹𐌿𐌿 > 𐌹𐌿𐌿𐌿 = 𐌹𐌿.
 𐌹𐌿 > 𐌹𐌿, 𐌹𐌿 > 𐌿𐌹𐌿
 𐌹𐌿. 𐌹𐌿 > 𐌿𐌹𐌿
 𐌹𐌿𐌿. 𐌹𐌿 > 𐌿𐌹𐌿
 𐌹𐌿𐌿. 𐌹𐌿 > 𐌿𐌹𐌿
 𐌹𐌿𐌿.



𐌹𐌿𐌹𐌿𐌿

𐌹𐌿𐌹𐌿𐌿 > 𐌿. 𐌹𐌿 > 𐌿? 𐌹𐌿 > 𐌿𐌹!
 𐌹𐌿 > 𐌿𐌹!, > 𐌿𐌹*, > 𐌿𐌹𐌿, >
 𐌿𐌹𐌿. 𐌹𐌿 > 𐌿𐌹𐌿 > 𐌿𐌹𐌿, 𐌹𐌿 > 𐌿𐌹
 𐌿. 𐌹𐌿 > 𐌿𐌿, 𐌹𐌿 > 𐌿𐌹𐌿𐌿 = 𐌿𐌹, > 𐌿𐌹
 𐌿, > 𐌿𐌹𐌿 > 𐌿𐌹𐌿. 𐌹𐌿 > 𐌿𐌹𐌿𐌿,
 𐌹𐌿 > 𐌿𐌹𐌿𐌿𐌿.
 𐌹𐌿𐌹𐌿𐌿 > 𐌹𐌿, 𐌹𐌿! 𐌹𐌿𐌹𐌿𐌿𐌿𐌿. 𐌹
 𐌹𐌿 > 𐌿𐌹𐌿. 𐌹, 𐌹𐌿, 𐌹𐌿 > 𐌿𐌹𐌿
 𐌹𐌿𐌿.



𐌹𐌿𐌹𐌿𐌿𐌿
 𐌹𐌿𐌹𐌿𐌿𐌿

𐌹𐌿𐌿𐌿 > 𐌿𐌿𐌿𐌿: 𐌹𐌿𐌹𐌿𐌿𐌿 > 𐌹𐌿𐌿𐌿
 𐌹𐌿𐌿. 𐌹𐌿𐌿𐌿 > 𐌹𐌿𐌿𐌿. 𐌹𐌿𐌿𐌿 > 𐌹𐌿𐌿𐌿
 𐌹𐌿𐌿. 𐌹𐌿𐌿𐌿 > 𐌹𐌿𐌿𐌿. 𐌹𐌿𐌿𐌿 > 𐌹𐌿𐌿𐌿
 𐌹𐌿𐌿.

𐌹𐌿 = 𐌹𐌿𐌿𐌿 (Grimm) > 𐌹𐌿 > 𐌹𐌿𐌿
 𐌹𐌿, > 𐌹𐌿 > 𐌹𐌿𐌿. 𐌹𐌿𐌿𐌿 > 𐌹𐌿𐌿𐌿
 > 𐌹𐌿𐌿.

𐌹𐌿 > 𐌹𐌿 > 𐌹𐌿 > 𐌹𐌿𐌿. 𐌹𐌿
 > 𐌹𐌿 > 𐌹𐌿 > 𐌹𐌿𐌿𐌿𐌿:
 𐌹𐌿 > 𐌹𐌿 > 𐌹𐌿𐌿𐌿. 𐌹𐌿 > 𐌹𐌿 > 𐌹𐌿
 𐌿. 𐌹𐌿 > 𐌹𐌿 > 𐌹𐌿𐌿. 𐌹𐌿 > 𐌹𐌿 > 𐌹𐌿

𐌹𐌿 > 𐌹𐌿 > 𐌹𐌿𐌿𐌿. 𐌹𐌿𐌿𐌿
 > 𐌹𐌿! 𐌹𐌿𐌿𐌿. 𐌹𐌿 > 𐌹𐌿𐌿 > 𐌹𐌿
 > 𐌹𐌿𐌿, > 𐌹𐌿𐌿𐌿 > 𐌹𐌿𐌿, 𐌹𐌿
 > 𐌹𐌿𐌿𐌿.

𐌹𐌿, 𐌹𐌿𐌿𐌿𐌿 > 𐌹𐌿𐌿𐌿? 𐌹𐌿𐌿
 𐌹𐌿 > 𐌹𐌿𐌿. 𐌹𐌿 > 𐌹𐌿 > 𐌹𐌿𐌿𐌿.
 𐌹, 𐌹𐌿𐌿𐌿 > 𐌹𐌿𐌿𐌿. 𐌹𐌿 > 𐌹𐌿.
 𐌹𐌿 > 𐌹𐌿𐌿𐌿, 𐌹𐌿 = 𐌹𐌿.

𐌹𐌿 > 𐌹𐌿 > 𐌹𐌿𐌿𐌿𐌿, 𐌹
 > 𐌹𐌿 > 𐌹𐌿𐌿𐌿 > 𐌹𐌿𐌿𐌿𐌿𐌿𐌿𐌿𐌿
 𐌹𐌿𐌿. 𐌹𐌿𐌿𐌿𐌿 > 𐌹𐌿𐌿𐌿𐌿𐌿
 𐌹𐌿𐌿.

𐌹𐌿 > 𐌹𐌿𐌿𐌿. 𐌹𐌿 > 𐌹𐌿 > 𐌹𐌿
 > 𐌹𐌿𐌿.



⊕Lൗ

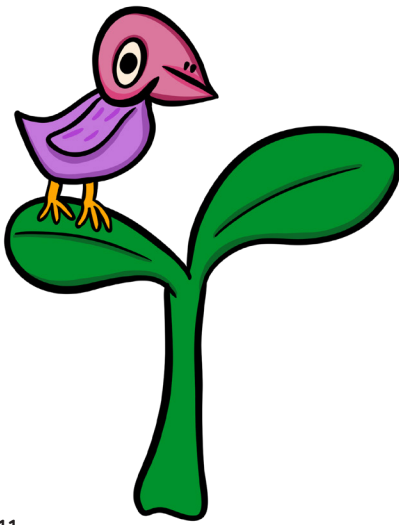
ൿൗ(ൗ+ൗൗൗൗൗൗൗ)

ൗൗൗ! ൗൗൗ? ൗൗൗൗൗൗ
>ൗൗൗൗ. ൗൗൗൗൗൗ! ൗൗൗൗൗ-
ൗൗൗൗ.

!ൗ! ൗൗൗൗ(ൗ) >ൗൗ, ൗൗൗൗ
ൗൗൗ. ൗൗൗൗ >ൗൗൗ. ൗൗൗൗ >=
ൗൗൗ(ൗ)ൗൗൗ. ൗൗൗൗൗൗ=ൗൗൗ
ൗ. ൗൗൗൗൗൗൗൗൗൗൗൗ=ൗ. ൗ
ൗൗൗൗ. ൗൗൗൗൗൗൗൗൗ. ൗൗൗൗ
ൗൗൗ.

ൗൗൗൗൗൗ >ൗ. ൗൗൗൗൗൗൗൗ
ൗൗ >ൗ. ൗൗൗൗൗൗ >ൗൗൗൗൗ. ൗ
ൗൗൗൗൗൗൗൗൗൗൗൗൗൗ. ൗ
!ൗൗൗൗൗൗൗൗൗ.

ൗൗൗൗൗൗ >ൗ. ൗൗൗൗ. ൗ >
=ൗൗൗ, ൗൗൗൗൗ. ൗൗൗൗ+ൗ >
=ൗൗൗൗൗ+ൗ >ൗ. ൗൗൗൗൗൗ
ൗൗൗൗൗൗ >ൗൗൗ.



ൗൗൗൗ: ൗൗൗ(ൗ)ൗൗൗൗൗ
>ൗൗൗ. ൗൗ? !ൗൗൗൗ, ൗൗ(ൗ)ൗ
ൗൗൗ >ൗൗൗ!

ൗൗൗൗൗൗ: ൗൗൗൗൗ=ൗ
(ൗ). ൗൗൗൗൗൗൗൗ. ൗൗൗൗ
ൗൗൗൗൗൗൗൗ, ൗൗൗൗ. ൗൗൗൗ
ൗൗൗൗൗൗൗൗൗൗ. ൗൗൗ
>ൗൗൗൗ=ൗ.

ൗൗൗൗൗൗ(ൗ)ൗൗൗ >ൗ=ൗൗ
ൗൗ(ൗ). ൗൗ(ൗ)ൗ >ൗൗൗൗൗൗ. ൗ
(ൗ)ൗ >ൗ=ൗ, ൗൗൗൗൗൗൗൗ
ൗൗ.

ൗൗ(ൗ) >ൗ! ൗൗൗൗ=ൗ(ൗ), ൗ
ൗ >=ൗൗ(ൗ) >=ൗൗ(ൗ). ൗ >
ൗ, >ൗ. ൗൗൗൗ >ൗൗൗ. ൗ >ൗ
ൗൗ.

ൗൗ >ൗൗൗൗ(ൗ) >ൗൗൗ. ൗ >
ൗ: ൗ(ൗ) >ൗൗൗൗൗൗൗ(ൗ)ൗ
(ൗ) >ൗൗൗൗൗൗൗ. ൗ(ൗ) >ൗ
ൗ(ൗ) >ൗൗൗൗൗൗ. ൗൗ >
ൗൗൗൗ(ൗ)ൗ >ൗൗൗൗൗ(ൗ).
ൗ(ൗ) >ൗൗൗ(ൗ).

⊕Lൗൗൗൗൗ >ൗൗൗ >ൗ? ൗൗൗ
>ൗൗൗൗൗ¹ൗ, ൗൗൗൗൗൗ
ൗ.

1 ൗൗൗ >=ൗൗൗൗ

FAQ

Hello! Welcome to toki pona. Maybe you're new and want to know more about this unknown language. Great! This page will answer your questions.

What is Toki Pona?

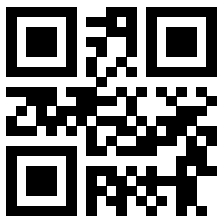
It's a small and good minimal language. There are only 14 letters and less than 200 words. The Canadian linguist Sonja Lang created it in 2001. Now there already are thousands of speakers around the world.

Why would I learn Toki Pona?

Maybe you're fascinated by the possibility of describing the world using less than 200 words. Maybe you wish to talk to your friends without other people knowing what you're saying. Maybe you just want to boast of speaking many languages. There are different reasons for different speakers.

How can I learn and where can I use Toki Pona?

There is the official Toki Pona book by Sonja Lang. There are also many free courses online. Furthermore, there are YouTube videos and Memrise courses. A very popular and old course was o kama sona e toki pona! A newer and up to date course is lipu sona pona. Toki Pona groups and learning resources are on our website:



liputenpo.org

If you want to join us, that's great!

ISSN 2752-4639



9 772752 463006